



West River Greenway Connector Trail Concept



Connecting Trails Together Advances the Niagara River Greenway Plan

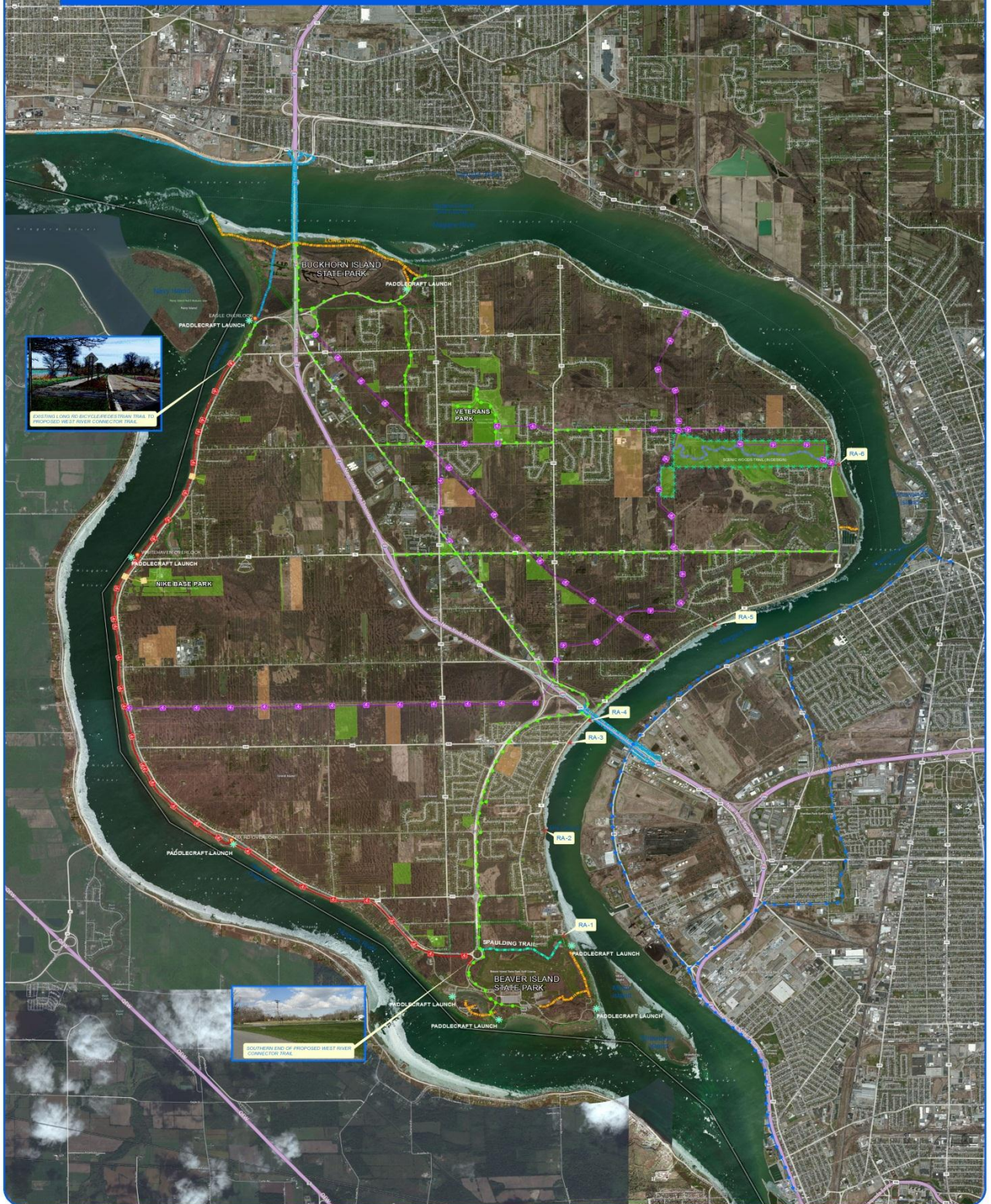
NYS Law Chapter 460, Article 39,
Subsection 39.03:

Defines the Niagara River
Greenway as a linear system of
parks and conservation areas
linked by a network of
multi-use *trails*

The Concept

- A multi-use multi-season trail on Grand Island overlooking the west channel of the Niagara River.
- The trail, 8 miles in length, would connect Beaver Island State Park with Buckhorn State Park.
- Includes a lateral connection to the Town of Grand Island Nike Base Park.
- The trail would link together overlooks and access points at the water's edge providing a unique opportunity to experience the Niagara River.

West River-Greenway Multi-Use Connector Trail Concept



Legend

- EXISTING STREET SHARED BICYCLE NETWORK
- EXISTING ERIE COUNTY RIVERWALK MULTI-USE TRAIL
- PLANNED CONNECTION TO THE WEST RIVER MULTI-USE TRAIL
- WEST RIVER GREENWAY MULTI-USE CONNECTOR TRAIL
- FUTURE MULTI-USE TRAIL NETWORK
- MULTI-USE PEDESTRIAN BICYCLE TRAIL
- NATURE TRAIL
- TOWN OWNED RIVERFRONT ACCESS
- N.Y. STATE PARK
- PROPERTY OWNED BY THE TOWN OF GRAND ISLAND
- PROPERTY OWNED BY THE GRAND ISLAND SCHOOL DISTRICT



MAP PREPARED BY THE TOWN OF GRAND ISLAND ENGINEERING DEPT.

2255 BASELINE ROAD,
GRAND ISLAND, NEW YORK 14072
PH: (716) 773-9600 x335 WEB ADDRESS: WWW.GIGOV.COM



0 900 1,800 3,600 Feet

West River-Greenway Multi-Use Connector Trail Concept North Segment



Legend

- EXISTING STREET SHARED BICYCLE NETWORK
- EXISTING ERIE COUNTY RIVERWALK MULTI-USE TRAIL
- PLANNED CONNECTION TO THE WEST RIVER MULTI-USE TRAIL
- WEST RIVER GREENWAY MULTI-USE CONNECTOR TRAIL
- FUTURE MULTI-USE TRAIL NETWORK
- MULTI-USE PEDESTRIAN BICYCLE TRAIL
- NATURE TRAIL
- TOWN OWNED RIVERFRONT ACCESS
- N.Y. STATE PARK
- PROPERTY OWNED BY THE TOWN OF GRAND ISLAND
- PROPERTY OWNED BY THE GRAND ISLAND SCHOOL DISTRICT



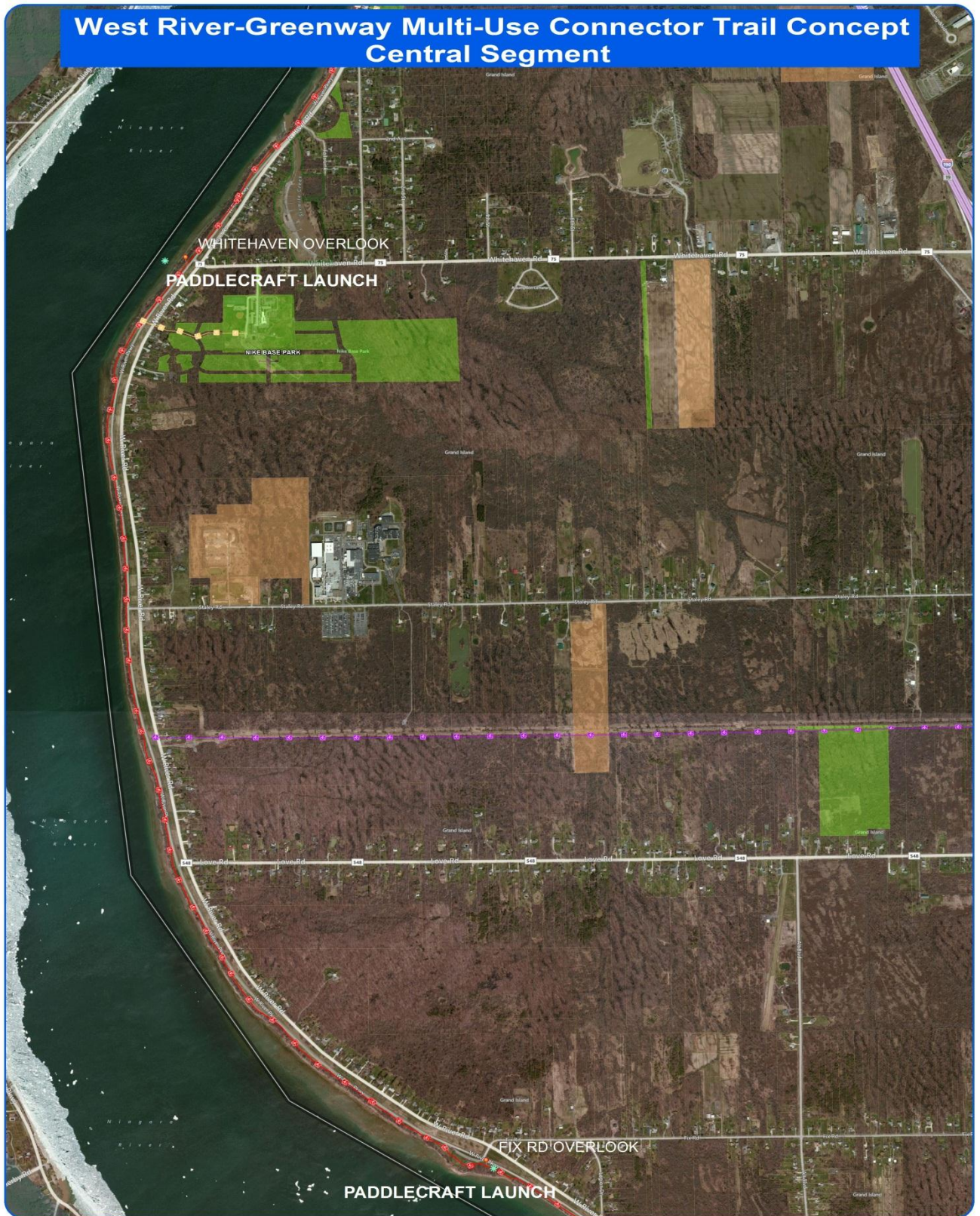
MAP PREPARED BY THE TOWN OF GRAND ISLAND ENGINEERING DEPT.

2255 BASELINE ROAD,
GRAND ISLAND, NEW YORK, 14072
PH. (716) 773-8600 x(635) WEB ADDRESS: WWW.GIGOV.COM

Path: Z:\Working projects\GRAND ISLAND BIKEWAYS_Fc_7-23-12_bing_Panels.mxd



West River-Greenway Multi-Use Connector Trail Concept Central Segment



Legend

- EXISTING STREET SHARED BICYCLE NETWORK
- EXISTING ERIE COUNTY RIVERWALK MULTI-USE TRAIL
- PLANNED CONNECTION TO THE WEST RIVER MULTI-USE TRAIL
- WEST RIVER GREENWAY MULTI-USE CONNECTOR TRAIL
- FUTURE MULTI-USE TRAIL NETWORK
- MULTI-USE PEDESTRIAN BICYCLE TRAIL
- NATURE TRAIL
- TOWN OWNED RIVERFRONT ACCESS
- N.Y. STATE PARK
- PROPERTY OWNED BY THE TOWN OF GRAND ISLAND
- PROPERTY OWNED BY THE GRAND ISLAND SCHOOL DISTRICT



MAP PREPARED BY THE TOWN OF GRAND ISLAND ENGINEERING DEPT.

2255 BASELINE ROAD,
GRAND ISLAND, NEW YORK, 14072
PH. (716) 773-8900 x6353 WEB ADDRESS: WWW.GIGOV.COM

Path: Z:\Working projects\GRAND ISLAND BIKEWAYS_Fc_7-23-12_bing_Panels.mxd



West River-Greenway Multi-Use Connector Trail Concept South Segment



- Legend**
- EXISTING STREET SHARED BICYCLE NETWORK
 - EXISTING ERIE COUNTY RIVERWALK MULTI-USE TRAIL
 - PLANNED CONNECTION TO THE WEST RIVER MULTI-USE TRAIL
 - WEST RIVER GREENWAY MULTI-USE CONNECTOR TRAIL
 - FUTURE MULTI-USE TRAIL NETWORK
 - MULTI-USE PEDESTRIAN BICYCLE TRAIL
 - NATURE TRAIL
 - ◀ TOWN OWNED RIVERFRONT ACCESS
 - N.Y. STATE PARK
 - PROPERTY OWNED BY THE TOWN OF GRAND ISLAND
 - PROPERTY OWNED BY THE GRAND ISLAND SCHOOL DISTRICT



MAP PREPARED BY THE TOWN OF GRAND ISLAND ENGINEERING DEPT.

2255 BASELINE ROAD,
GRAND ISLAND, NEW YORK 14072
PH: (716) 773-9600 x335 | WEB ADDRESS: WWW.GIGOV.COM



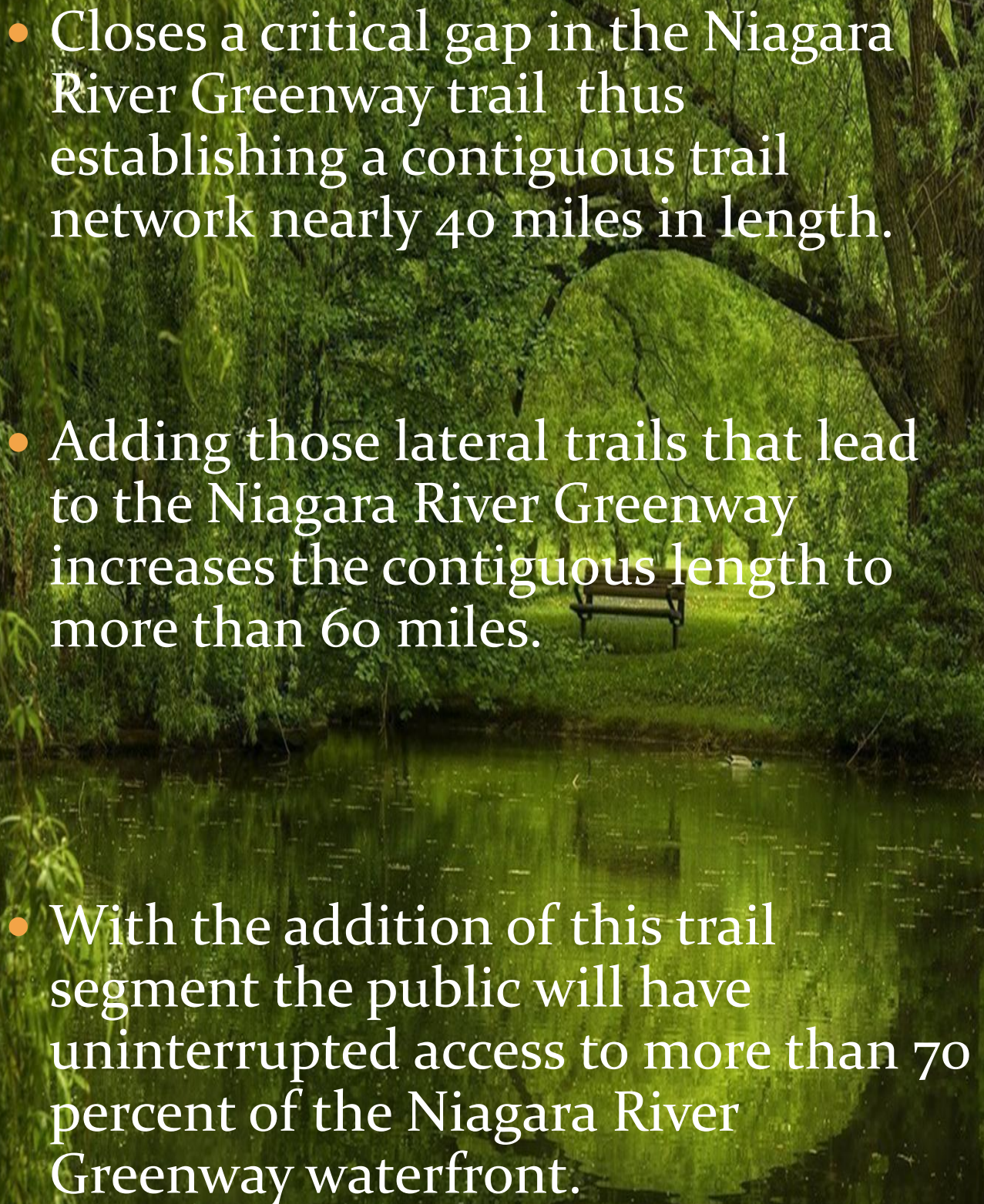
0 250 500 1,120 Feet

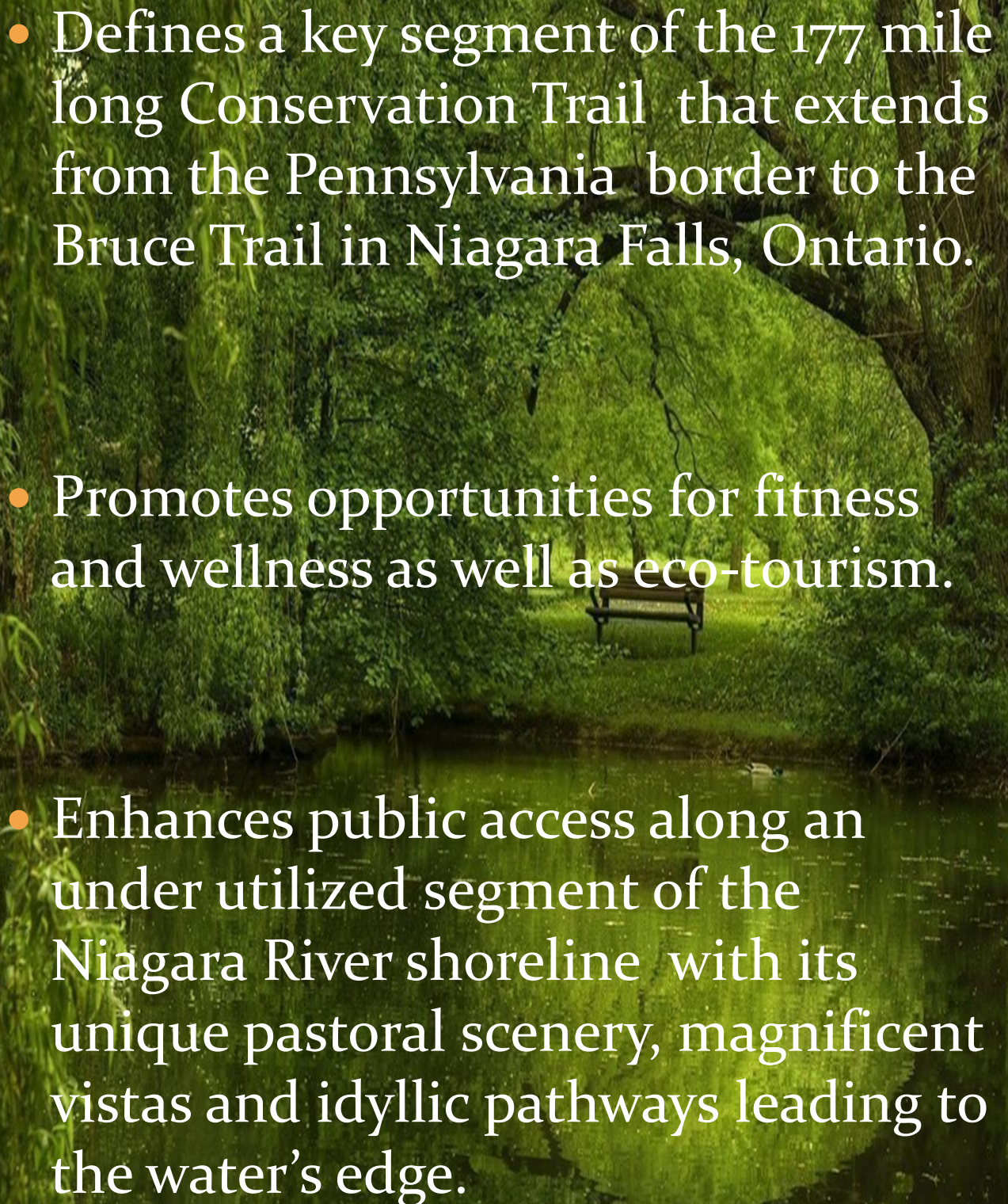
Design Considerations

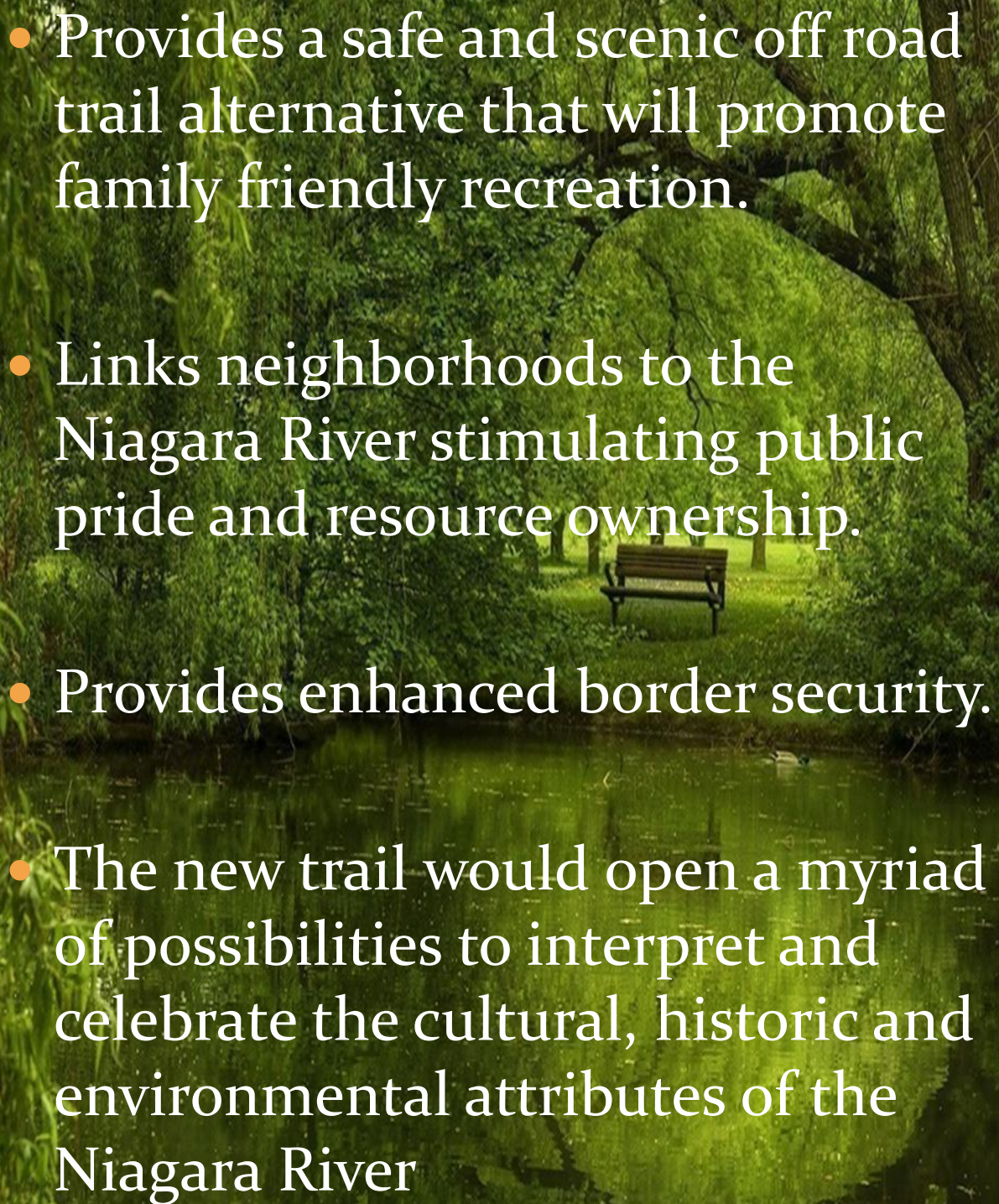
- The trail would be located within the mowed grass strip between the parkway and the river.
- Construction would not impact wetlands, woodlands or riparian habitat.
- Requires minimal land clearing.
- Existing highway drainage infrastructure is unaffected.
- At Big Six Mile Creek the trail would follow the existing bridge sidewalk.



Trail Benefits

- 
- A scenic view of a river with lush green trees and a bench. The river is calm, reflecting the surrounding greenery. A wooden bench is visible on the grassy bank. The trees are dense and vibrant green, creating a serene atmosphere.
- Closes a critical gap in the Niagara River Greenway trail thus establishing a contiguous trail network nearly 40 miles in length.
 - Adding those lateral trails that lead to the Niagara River Greenway increases the contiguous length to more than 60 miles.
 - With the addition of this trail segment the public will have uninterrupted access to more than 70 percent of the Niagara River Greenway waterfront.

- 
- A lush green park scene featuring a calm river in the foreground, a wooden bench in the middle ground, and dense foliage and trees in the background. The scene is peaceful and idyllic, with reflections visible in the water.
- Defines a key segment of the 177 mile long Conservation Trail that extends from the Pennsylvania border to the Bruce Trail in Niagara Falls, Ontario.
 - Promotes opportunities for fitness and wellness as well as eco-tourism.
 - Enhances public access along an under utilized segment of the Niagara River shoreline with its unique pastoral scenery, magnificent vistas and idyllic pathways leading to the water's edge.

- 
- A scenic view of a park with a river, trees, and a bench. The image is a composite of two photos. The top photo shows a large, mossy rock in a forest with a wooden bench in the background. The bottom photo shows a river with a small boat and a person in the distance. The text is overlaid on the top photo.
- Provides a safe and scenic off road trail alternative that will promote family friendly recreation.
 - Links neighborhoods to the Niagara River stimulating public pride and resource ownership.
 - Provides enhanced border security.
 - The new trail would open a myriad of possibilities to interpret and celebrate the cultural, historic and environmental attributes of the Niagara River

Potential Funding Sources

- State Parks Greenway Fund
- Erie, Buffalo, Olmsted Greenway Fund
- New York State Environmental Protection Fund
- New York State Quality Communities Grant Program
- Federal Highway Trust Fund

Next Steps

- **Develop the concept further.**
- **Build public consensus.**
- **Partner with the New York State Office of Parks, Recreation and Historic Preservation.**
- **Determine Consistency with the Niagara River Greenway Plan.**
- **Meet with the Greater Buffalo Niagara Regional Transportation Council (regional MPO) to prioritize project funding.**
- **Enlist the support of elected officials at the Federal and State level.**

A scenic photograph of a lake, likely a Great Lake, with a rocky and grassy shoreline in the foreground. Bare, dark tree branches frame the top and left sides of the image. The water is calm and blue, reflecting the sky. In the distance, a line of trees and some buildings are visible on the opposite shore. The sky is a clear, pale blue with a few wispy clouds. The text "Comments Questions" is overlaid in the center in a dark blue, serif font.

Comments Questions